

极限 尽享无限
的突破



Basic Information

Total weight

8600kg

Max. towing force

82kN

Track board with

400mm

Land pressure

51kPa

Rated power

66.2KW

Cutting angle_(adjustable)

55°



Technical Specification

Total weight	8600 kg
Max towing force	82 kN
Engine model	LR4A3ZU22/0662
Engine rated power /speed	66.2/2200 kw/ r/min
Fuel consumption of the engine	≤225 g/kw.h
Engine max torque	345 N.m
Forward 1-4gear	2.4 ~ 10.4 km/h
Reverse 1-2 gear	4.9 ~ 8.9 km/h
Track board with	400 mm
Land pressure	51 kPa
Overall dimension (L×W×H)	4200×2480×2740 mm
Bulldozer shovel (W×H)	2480×922 mm
Blade max lifting height	736.5 mm
Blade max digging depth	370 mm
Cutting angle(adjustable)	55 °
Twing equipment/Scarifier(Optional)	Fixed/three teeth

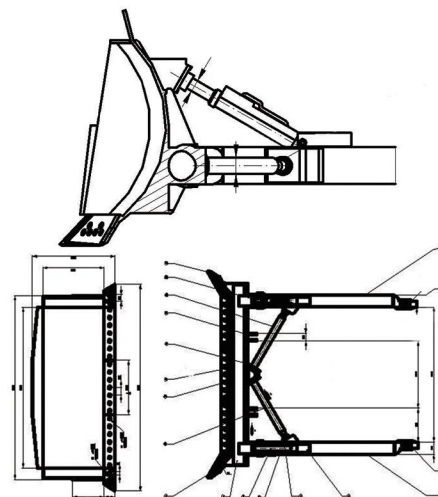
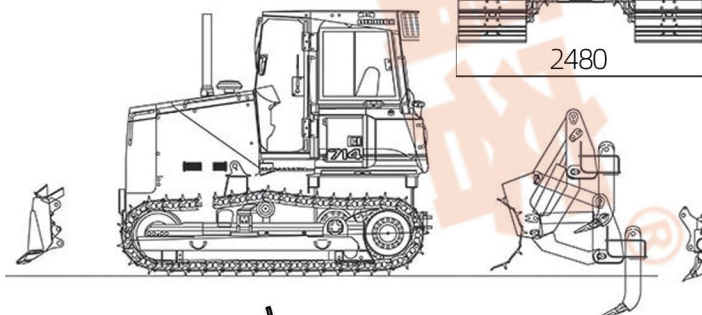
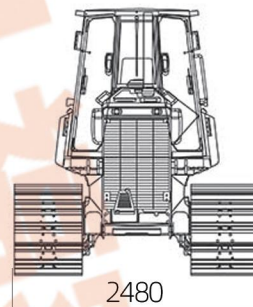
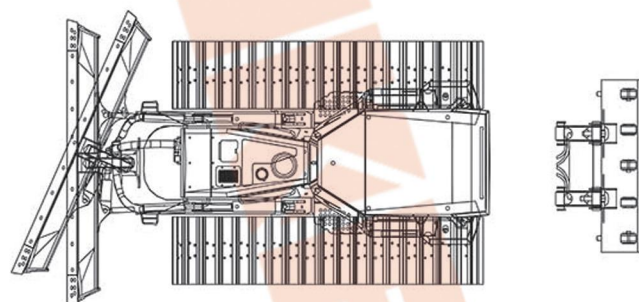
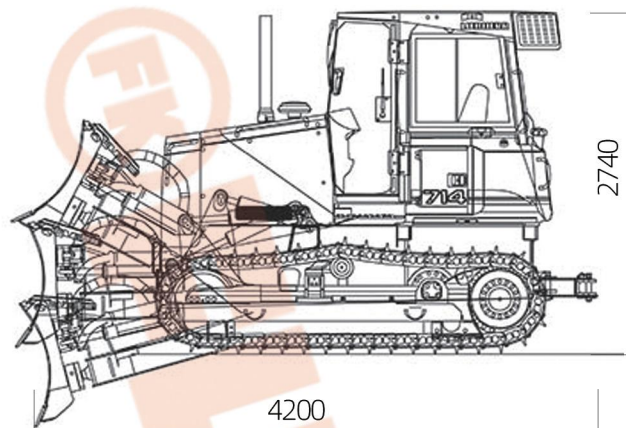
Excellent Performance
Outstanding Performance
The Equipment Is Firm
Reliable Quality
Brand Guarantee
Reliable structure
Excellent efficiency

Product Features

Booster
Car air conditioner
Protective Device
GPS positioning
On-board repair tools
CD Player
Fire extinguisher
Comfortable operation
Safe performance
High efficiency



Outline



Contact us:

Phone/Whatsapp:+8613505697380

Email:fk002@fukebn.com/hesun525@gmail.com

安徽福客重工有限公司

Anhui Fuke Heavy Industry Equipment Co., Ltd.